



DUCKETT CRUSH TATOO-ET TR TP TC TY TV TL TD TE HH1T HH2T HH3T HH4T HH5T HH6T MWT
CRUSH X GOLD CHIP X DURHAM

Sire: MAVERICK-I CRUSH
Dam: DUCKETT G CHIP TOKYO-ET EX-93
3-09 2X 365D 14,937 kgM 3.9% 579 kgF 3.3% 488 kgP
MGS: MR CHASSITY GOLD CHIP-ET

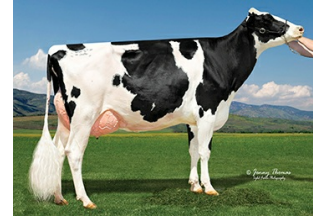
Daughter Average:
12,234 kgM 478 kgF 3.90%F 389 kgP 3.20%P



Charbelle Tattoo Pix



Londaly Tatoo Tanzanie



Legacy-Ranch Tatoo Lily-ET

INDEXES

TPI	2047
NM\$	-51
CM\$	-39
Feed Efficiency (\$)	-40
Feed Saved	-11
HHP\$	-32
DWP\$	-99
WT\$	45
CW\$	40

PRODUCTION

PTA Milk (lbs)	-332
PTA Protein (lbs)	1
PTA Protein (%)	0.04
PTA Fat (lbs)	-26
PTA Fat (%)	-0.05
Production Reliability %	99
Dtrs/Herds	8798/2915

TYPE

PTA Type	2.87
Udder Composite	2.23
Feet & Leg Composite	0.73
Body Weight Composite	0.22
Dairy Composite	1.30
Type Reliability %	99
Dtrs/Herds	4970/1832

DAUGHTER FERTILITY

Fertility Index/Rel. %	-2.4
DPR/Rel. %	-2.0/98
HCR/Rel. %	0.8/96
CCR/Rel. %	-2.3/98

SIRE FERTILITY

SCR/Rel. %	-1.9/97
------------	---------

MANAGEMENT TRAITS

SCE/Rel. %	2.0/99
DCE/Rel. %	1.8/96
Gestation Length/Rel. %	2.1/99
Early First Calving/Rel. %	-8.4/96
SSB/Rel. %	6.1/97
DSB/Rel. %	5.1/96
Productive Life/Rel. %	1.4/98
Livability/Rel. %	-2.9/91
Residual Feed Intake/Rel. %	-22/30
SCS/Rel. %	2.70/99
Milking Speed/Rel. %	109/96

CDCB/HA TYPE TRAITS

Stature	short	2.17	tall
Strength	frail	0.25	strong
Body Depth	shallow	1.44	deep
Dairy Form	tight ribbed	2.64	open ribbed
Rump Width	narrow	3.93	wide
Rump Angle	high pins	0.99	sloped
Rear Leg (side view)	posty	3.16	sickled
Rear Leg (rear view)	hock-in	0.32	straight
Foot Angle	low angle	1.27	steep angle
Feet & Leg Score	low	1.57	high
Fore Udder	loose	3.58	strong
Rear Udder Height	low	2.76	high
Rear Udder Width	narrow	2.38	wide
Udder Cleft	weak	1.92	strong
Udder Depth	deep	2.63	shallow
Front Teat Placement	wide	1.31	close
Rear Teat Placement	wide	1.20	close
Teat Length	short	-1.38	long

ZOETIS

WELLNESS TRAITS

CDCB

	Value	Rel. %		Value	Rel. %
	106	63	Mastitis	2.1	92
	89	54	Retained Placenta	-1.1	88
	90	52	Metritis	-1.2	88
	97	43	Hypocalcemia/Milk Fever	-0.1	74
	94	48	Ketosis	0.7	87
	92	44	Displaced Abomasum	-0.7	93
	101	43	Lameness		
	102	39	Cow Respiratory Disease		
	96	33	Cow Abortion		
	97	50	Twinning		
	93	27	Cystic Ovary		
	N/A	N/A	Heifer Livability	1.2	80
	105	48	Calf Respiratory Disease		
	107	43	Calf Scours		
	101	54	Calf Livability		